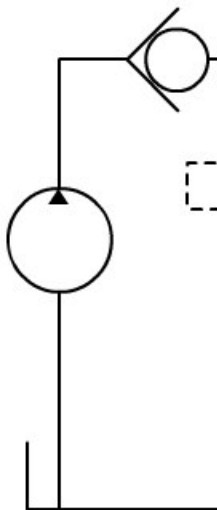


- 1 Run the [Hydraulics Sim](#)
- 2 Construct the circuit a regulator to provide 20 flow. A [construction di](#)



- 3 Operate the directional rotational speed of the

**Q1 With the flow control approximately how many make in 1 minute (rpm)?**

rpm (Enter your answer)

- 4 Adjust the flow control valve and observe the effect on the motor speed

## PLTS – Team Working

There are many opportunities within the curriculum resources for students to either work individually or in small teams.

In this activity, students work together to build a circuit to control a hydraulic motor. They must reach agreements and collaborate to successfully complete the task. A student is able to demonstrate leadership skills and provide constructive support and feedback to others in overcoming the technical challenges of the task.