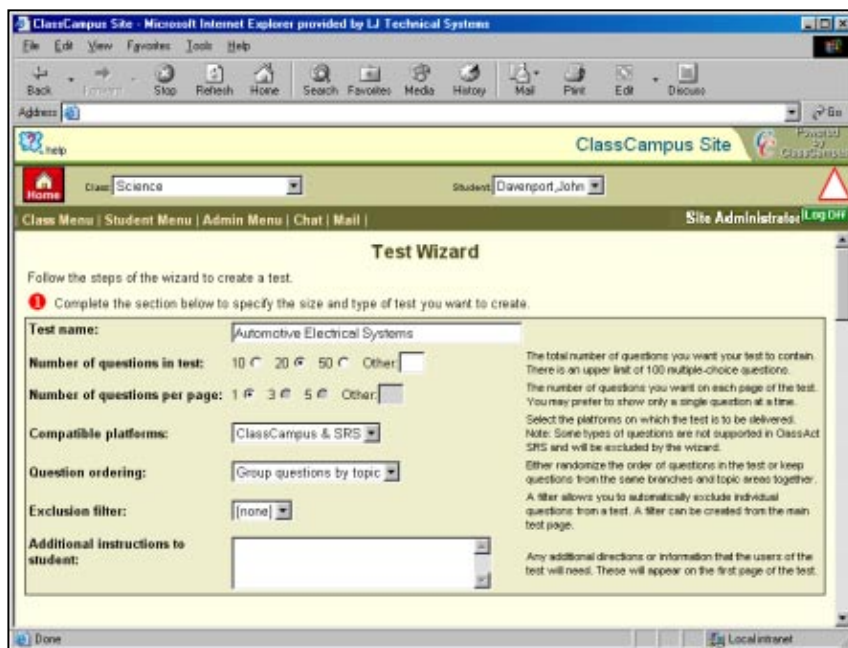




# Question Bank - Automotive Materials



**Items required:**

- Computer with Internet access, standard web browser and Macromedia Flash plug-in.

This Internet-based package provides a unique question bank facility that has been specifically designed for use with ClassCampus. The automotive materials question bank contains 500 questions, which can be used to create randomly generated tests.

The teacher enters the question bank facility on ClassCampus as a tutor and selects the academic materials question bank. The teacher is then guided through making the required choices to generate a test.

When creating a test, the teacher has a choice of topics from which questions will be randomly selected to form the test.

A test can be completed by a student via the LJ ClassCampus virtual learning environment.

The system also offers the options of generating versions of the tests so that the teacher can use them with a whole class. A student response system, ClassActSRS, allows individual students to respond to the tests using a wireless keypad device.



**Automotive Materials Question Bank topic areas include:**

- Safety, Workshop Operation, Components and Careers
- Automotive Electrical Systems
- Ignition Systems
- Fuel and Exhaust Systems
- Emission Control Systems
- Engine, Lubrication and Cooling Systems
- Wheels, Steering and Suspension Systems
- Brake Systems
- Manual Transmission and Drive Systems
- Automatic Transmission Systems
- Air Conditioning and Heating Systems

**Order as:**

ATB550/AL Question Bank – Automotive Materials Annual License  
Requires CCOL/AL Institute ClassCampus Registration Annual License.

	No. of questions	Average time
Typical test of 50 questions	50	1 minute
<b>Total</b>		50 minutes