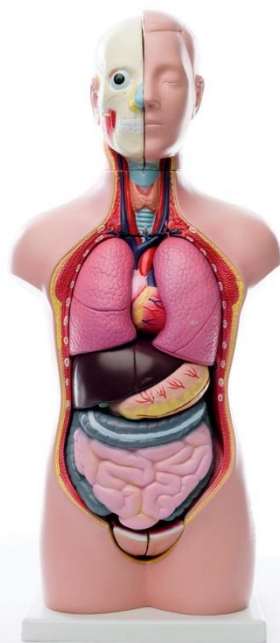


## Product Information Sheet

### Human Torso Kit



Our range of science experiment kits will equip you with all you need to carry out each of the practical experiments included in your LJ Create science program.

The kits can be used for teacher demonstration, individual student, or group activities.

Each of the experimental kits are provided in a labelled storage box to allow for easy identification and selection during classroom activities.

Our range of science kits are also supplied with an inventory reference sheets to provide simple resource management and replenishment of any consumable items.

A range of items are supplied in order to carry out the scientific hands-on learning tasks, each item is conveniently contained within a durable vacuum formed box insert.

This kit can be used as demonstration model or for student investigation into the anatomy of the human torso. The main organs can be removed to provide insight into the proportion and location of each organ within the body.

#### Typical Practical Tasks Include:

- The Human Body

#### Modelled Human Organs Include:

- The Lungs
- The Heart
- The Brain
- The Pancreas
- The Intestines
- The Liver
- The Stomach

#### Items Included:

- Human Body Model
- Storage Box
- Inventory Sheet

#### Other Items Required:

- LJ Create Science Content and Computer

#### General Information:

Packed Volume: Approx. 0.02 m<sup>3</sup>

Packed Weight: Approx. 1 kg

**Order Code: 500-07**

P8566-A

For more information visit [www.ljcreate.com](http://www.ljcreate.com)